

UA-07 TouchSense Bluetooth Headset User Manual

Introduction:

Thank you for choosing UA-07, TouchSense Bluetooth Headset. It supports Bluetooth v2.1, which increase voice quality and product range, also reduce power consumption.

Inside the package, we should find:

- 1x TouchSense Bluetooth Headset
- 1x Charger
- 1x User Guide
- 1x Ear Hook
- 1x Ear Cushion



Product Specification

Bluetooth Version	V2.1 and with backward compatible V2.0, V1.2 and V1.1
Bluetooth Profile Supported	Headset and Hands-free
Dimensions	48.5(L) x 17(W) x 10(H) mm
Weight	10 grams
Charging Time	Around 1.5 hours
Talk Time	Up to 7 hours
Standby Time	Up to 160 hours
Product Range	10 meters with no obstructions
Operation Temperature	0-50°C
Battery Type and Capacity	Rechargeable Li-Polymer 100mAh

Charging the headset:

Before using the headset, please insert the charger into the power source and connect the other end to micro USB charging socket of the headset to charge the battery fully.

To extend the battery life, we recommended re-charging the battery every 6 months. Charging indication will be delayed in a few seconds if the headset has not been used for a long period of time.

Status	Status Indicator	Audio
1. Charging	Red LED	
2. Fully charged	The LED goes off	
3. Low battery	Red LED for every five seconds	A short beep every 20 seconds

Turning Your Headset On and Off:

Turning On the Headset

Press and hold the MFB until the LED flashes blue.

Turning Off the Headset

Press and hold the MFB until the LED flashes red.

Pairing Your Headset / Pairing Procedure:

The headset must be paired with the mobile phone (or other Bluetooth-enable device) before use.

A. With a Bluetooth mobile phone

1. Turn on the Bluetooth function in the mobile phone.
2. Place the headset and the phone where they are visible, within arm's length from each other.
3. Ensure the headset is OFF.
4. Press and hold the MFB until the headset LED flashes blue and red alternately, the headset is now at the pairing mode.
5. Search the headset by choosing the search function in the phone and select "TouchSense".
6. Enter "0000" if you are prompted to enter the passcode and press "OK". If yours supports Bluetooth v2.1, no code is required due to "Simple pairing" function.
7. When pairing is complete, the LED will flash blue and follows by beeps. A headset icon appears on the screen.
8. For some phones, you may need to manual press "connect" to connect the headset.
9. If the pairing is not complete within about 2 minutes, the headset will automatically go to standby mode and will turn off after 5 minutes. Do steps 2 through 7 repeatedly until succeed.

B. With two mobile phones (Multi-point)

Retractable Bluetooth headset supports a Multipoint function that allows simultaneous pairing with two phones.

1. Pair with the first phone (according to the pairing procedure part A).
2. Turn off the headset and the first paired phone is then disconnected automatically.
3. Pair with the second phone (according to the pairing procedure part A). The LED flashes blue once the second phone is paired.
4. Again, for some phones, you may need to manual press “connect” to connect the headset.
5. Go back to reconnect the first paired phone manually, press “connect” in the phone Bluetooth menu.

Reconnecting Your Headset:

1. If the headset has powered off, press the MFB once to reconnect manually with the phone after switching on the headset.
2. If the phone has powered off and headset is then disconnected, the headset will reconnect automatically when phone turns on again within 5 minutes. Otherwise, the headset will switch off.

Headset Features:

All features below are applicable to mobile phones with Bluetooth Hands-free profiles.

Reset / Remove the pairing history

The headset must be plugged to the power source. Press and hold the MFB until the red LED flashes once, then release it.

No network covered

If the service provider network is not available, headset will beep every 20 seconds.

Out of range alert

When the distance of the headset and mobile phone is nearly out of range, you will hear a beep from the earphone. The headset will automatically reconnect

within 15 minutes, otherwise it will off. If auto-connect is not supported, press the MFB once.

Transfer call from headset to mobile phone / or vice versa

During a conversation, press the MFB twice to transfer call from headset to phone. In contrary, press MFB twice for call transferring from phone to headset.

To End a Call

Press the MFB once to end an active call.

LED indication

Mode	Status indicator
Without mobile phone connection	Blue LED flashing 2 times for every 3 seconds
With mobile phone connection	Blue LED flashing 1 time for every 10 seconds

A. Headset is paired with a mobile phone

To Answer a Call

When there is an incoming call, the LED flashing blue and the ringtone will be heard on the headset, press the MFB once to accept.

To reject an incoming call

Press the MFB twice to reject (or reject the call directly on the phone).

Voice-activated dialing

If phone comes with a voice-activated dialing function, press the MFB once. When you hear a beep, say the voice tag.

Redialing last number called

If phone is equipped with redialing feature, press the MFB twice to redial the last number called.

B. Headset is paired with two mobile phones

To Answer / Reject a second incoming call

When you are on the call with first connected phone and another call coming from second connected phone, press MFB once to terminate the first call. You will then hear the ringtone from the earphone again, press MFB once to shift to second call. Alternately, reject it directly on the second connected phone.

Voice-activated dialing

Voice redialing is only allowed for those saved voice tag into the second connected phone.

Redialing last number called

Redial for the last call on the second connected phone.

Volume adjustment:

This headset designs with the external touch-sensitive controls, giving a simple and convenient volume adjustment.

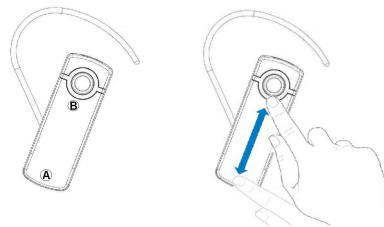
Slide your finger up or down along the headset surface:

A. Increase the Volume

Slide your finger up
(From point A to point B)

B. Decrease the Volume

Slide your finger down
(From point B to point A)



The compatibility of some features is not guaranteed for some phones in different operating system.

Safety Precautions:

1. If you must use the headset while driving, ensure your attention is fully focused on driving safely. Be a responsible driver and abide by the local laws.
2. Place in children's unreachable area, never allows them to play with the headset. Small parts pose as a choking hazard.

3. Obey all designated areas such as hospitals, electronically restrictive and hazardous environment that require an electrical device be switched off.
4. Turn off your headset prior to boarding on an aircraft. Do not use it while being asked by the flight attendant.
5. Do not attempt to disassemble the headset as it does not contain serviceable components.
6. Headset builds with battery inside and should dispose of it according to local regulations, not as a household waste.

Maintenance:

1. Consider turning your headset off before placing it in your pocket or bag. If the MFB is accidentally pushed, your mobile phone may place an unintended call.
2. Do not expose the headset to liquid or humidity, as it is not waterproof.
3. Do not use abrasive cleaning solvents to clean the headset.
4. Do not expose the headset to extremely high or low temperatures.
5. Do not contact your headset with sharp objects as this will cause scratches and damages.
6. Do not stick anything inside the headset as this may damage internal components.
7. Do not attempt to replace the headset's battery. It is built-in and is not removable.
8. Use only with the supplied charger when charging the headset.
9. Do not disassemble the charger as it may expose you to dangerous voltages or other risks. Incorrect reassembly can cause electric shock when the headset is subsequently used.